

Corona Camera UVSee TD90



UVSee TD90 is an innovative NDT - Non Destructive Testing equipment, that detects, pinpoints and documents flash-arc corona and arcing partial discharge camera. Being with high sensitivity UVSee TD90 is a power tool to detect UV emission in full daylight with high signals from faraway and nearby sources. UVSee TD90 is an ideal predictive maintenance device for overhead transmission lines and high voltage substations.

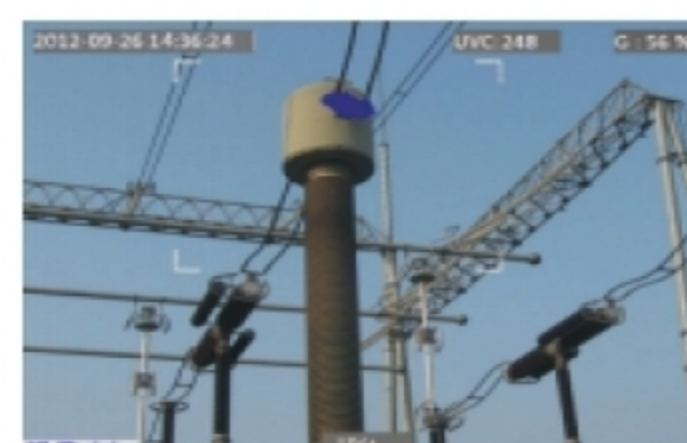
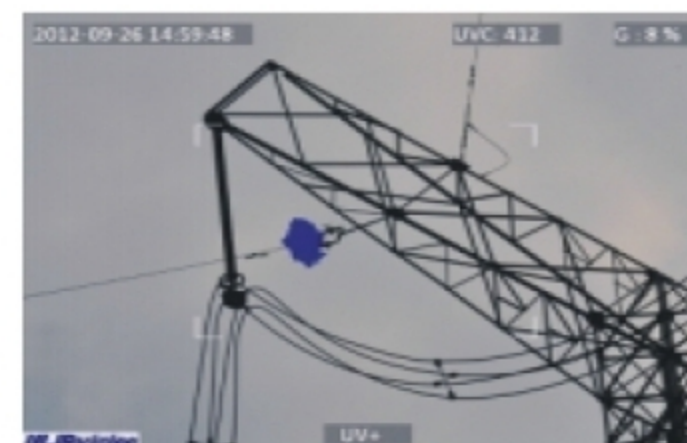
UVSee TD90 is ULIRvision's second generation of Solar Blind UV imaging system with an emphasis on high performance functionality and easy operation, it is widely used in Transmission line inspection, electrical utilities, HV research institutes, HV Electrical component inspection, HV panel inspection, service providers, laboratories and more.



Features

- High sensitivity to UV signals
- Auto focus of UV and visible channels
- Back ground noise reduction
- 5.7" folding and touchable color LCD
- LED UV events alarm
- Built-in GPS
- UV events counter
- Precise location of corona emitting sources
- Rapid optical zoom of the visible channel
- Videos & images capturing, recording and playba
- UVSee report software for documentation
- SD card upgrade the instrument firmware

Applications



Technical Specifications

UV - Optical Properties

| | |
|-----------------------------|--|
| Image Type | Monochrome video |
| Minimum UV Sensitivity | $3 \times 10^{-18} \text{ watt/cm}^2$ |
| Minimum Discharge Detection | 1.5pC @ 8 meters |
| Spectral range | UV 240 ~ 280 nm |
| Field of View H x V | 5.5° x 4.0° |
| Focus | Full manual and auto for UV and visible channels |
| Focus distance | 2m ~ ∞ |
| Detector Life Span | No degradation |
| Frequency | 50Hz/60Hz |

Visible - Optical Properties

| | |
|-----------------------------------|-----------------------------|
| Image Type | Color video |
| UV/Visible Overlay Accuracy | Better than 1 milliradian |
| Minimum visible light sensitivity | 0.1 lux |
| Zoom factor | 26x optical and 12x digital |

Display

| | |
|----------------|---|
| Type | 5.7" VGA color transreflective sunlight readable LCD, folding and touchable |
| Video Standard | PAL/NTSC switchable |
| Modes | Combined (UV & visible), UV only, Visible only |
| Corona Shades | White, Red, Blue |

Processing & Communication

| | |
|------------------|---|
| Image Processing | UV image enhancements |
| Video Streaming | H.264 standard |
| Alarms | LED |
| Menu | Button operation or touchable operation |
| Location | GPS |
| User settings | Time/Date, Language, operating modes |
| Audio Modes | Microphone input for audio notes |

Data Storage

| | |
|------------------|---------------------------------|
| Storage Media | 2G SD card |
| Image Format | JPG |
| Video Storage | AVI compressed format |
| Storage Capacity | 8000 images, or >4 hours videos |
| Data download | card reader |

Power system

| | |
|-------------------|--------------------------------|
| Power Consumption | 10W |
| Battery Type | Rechargeable li-ion battery |
| Battery Run Time | 2 hours |
| Charge | Online charging or charger |
| External supply | 9-12V, 10VA |
| Power adapter | 110-240VAC, 50-60HZ/12VDC 3.8A |

Environmental

| | |
|-----------------------|---------------------|
| Operating Temperature | -10°C ~ 50°C |
| Storage Temperature | -25°C ~ 60°C |
| Humidity | 95%, Non condensing |

Physical Characteristics

| | |
|--------|----------------------------------|
| Size | 238mm × 165mm × 91mm (L x W x H) |
| Weight | 2.5 kgs |

Interface

| | |
|-----------------|------------|
| Power interface | Yes |
| SD card slot | Yes |
| Video output | BNC |
| Audio output | Microphone |

Package

| | |
|----------|---|
| Standard | Corona Camera UVSee TD90, AC power adapter, 2pcs Li-ion battery, charger, SD card, SD card reader, video cable, Car power adapter, CDROM (UVSee software and Manual), Warranty card, Strap, transport case |
|----------|---|