

INFRARED SOLUTIONS - SYSTEMS & SERVICES



irPOD.net

INFRARED-CAMERA-CONFIGURATOR
www.irPOD.net

Thermal Imaging Cameras TI400 & TI600



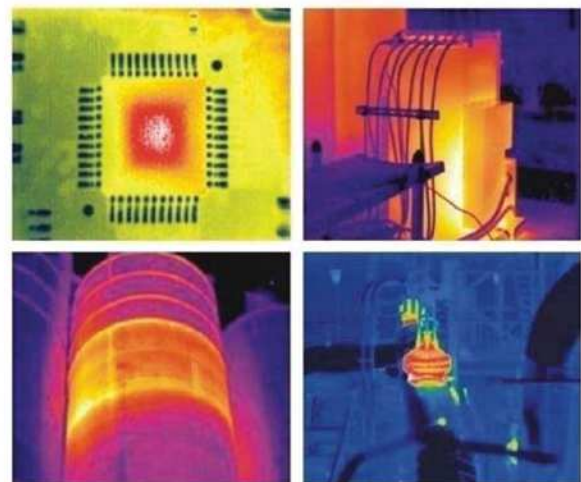
Hochauflösende Wärmebildkamera TI600S

ULIRvision TI600 ist mit modernster thermografischer Detektortechnologie ausgestattet. Sie bietet neben exzellenter Infrarotauflösung eine zusätzliche 5MP-Tageslichtkamera, Weitwinkel und Telephoto-Wechselobjektive, ein großes dreh- und klappbares Farb-LCD sowie ein monokulares Eyepiece und Autofokussfunktion auch mit manuellem Zugriff. Die Wärmebildkameras TI600 verfügt über eine hervorragende Ergonomie, die Bildqualität ist superb und für den anspruchsvollen Thermografen ein unverzichtbares Präzisionsinstrument bei der vorbeugenden Instandhaltung, bauphysiologischen und elektrothermografischen Diagnostik bis in den Forschungs- & Entwicklungsbereich. ULIRvision TI600 verfügt über flexible Temperaturmessbereiche und leistungsstarke Analysefunktionen für ein breites über Anwendungsspektrum. Es bleiben dem TI600 Anwender nahezu keine thermischen Anomalien mehr verborgen, weder im Nahbereich noch auf große Entfernungen.

Features

- Hochauflösende radiometrische IR-Sensorik
- Ausgezeichnete Bilddarstellung und akkurate Reproduziergenauigkeit
- Großflächiges schwenkbares 270°-Klappdisplay
- Auto-/ manuelle, motorische-Fokussierung auch für Einhandbedienung
- LED-Licht für Objektaufhellung mit integriertem-Laserpointer
- Integrierte 5MP Digitalkamera
- Große Temperaturmessbereiche
- 60s lange Sprachnotizen
- IR-Wechselobjektive vom Weitwinkel bis zum Teleobjektiv
- Skalierbare P-I-P IR-Bild-/Fotografie Fusion
- Multiple Messfunktionen
- Thermisches Echtzeitvideo- und Messdaten- Transfer zu PC über USB
- Neue Generation IRSee-Analysesoftware

Anwendungsgebiete



Technical Specifications

Item	TI400S	TI600S
● Detector Data <ul style="list-style-type: none"> Detector type IR resolution Pixel pitch Spectral range 	Uncooled FPA 384 × 288 25 μm 8~14 μm	Uncooled FPA 640 × 480 25 μm 8~14 μm
● Image Performance <ul style="list-style-type: none"> FOV/Min focus distance IFOV NETD/Sensitivity Frequency Focus Digital Zoom Visual camera Spotlight Image mode 	24° × 18° / 0.4m 48° × 36° / 0.3m 6° × 4.5° / 1m 1.3mrad(24° × 18°) <65mk@30℃ 50Hz/60Hz Manual/Motor/Auto 1~8× continuous 5.0 mega pixel 10cd/m² Thermal image, visual images, P-I-P, thermal fusion, W-I-W	24° × 18° / 0.6m 48° × 36° / 0.3m 12° × 9° / 1.2m 0.65mrad(24° × 18°) <60mk@30℃ 50Hz/60Hz Manual/Motor/Auto 1~8× continuous 5.0 mega pixel 10cd/m² Thermal image, visual images, P-I-P, thermal fusion, W-I-W
● Image Display <ul style="list-style-type: none"> Viewfinder Display 	0.6" color OLED, with magnification 5", 270° tiltable LCD, 800x480 pixels	0.6" color OLED, with magnification 5", 270° tiltable LCD, 800x480 pixels
● Measurement <ul style="list-style-type: none"> Temperature range Temperature accuracy Measurement correction Spotmeter Area Line profile Isotherms analysis Delta T Emissivity correction Alarm Dew point alarm Color Palettes Image adjustment Setting function Background temperature correction Atmospheric transmissivity correction Languages 	-20℃ ~ 600℃ (Standard) -20℃ ~ 1200℃ (optional) ±2℃ or ±2% of reading Auto/Manual 4 adjustable spots 3 adjustable boxes with max./min./avg temperature value Vertical/Horizontal Capture high/low temperature/interval Yes Adjustable from 0.01 to 1.0 or selected from list of materials Voice, color Yes 12 palettes (Including iron, rainbow, white hot and black hot etc.) Adjust contrast and brightness auto/manual Date/time, temperature/interval unit °C/°F/K, language Auto Auto 10 Languages (English, French, Italian, German, Spanish, Portuguese, Russian, Korean, Japanese, Simplified Chinese & Traditional Chinese)	-20℃ ~ 600℃ (Standard) -20℃ ~ 1200℃ (optional) ±2℃ or ±2% of reading Auto/Manual 4 adjustable spots 3 adjustable boxes with max./min./avg temperature value Vertical/Horizontal Capture high/low temperature/interval Yes Adjustable from 0.01 to 1.0 or selected from list of materials Voice, color Yes 12 palettes (Including iron, rainbow, white hot and black hot etc.) Adjust contrast and brightness auto/manual Date/time, temperature/interval unit °C/°F/K, language Auto Auto 10 Languages (English, French, Italian, German, Spanish, Portuguese, Russian, Korean, Japanese, Simplified Chinese & Traditional Chinese)
● Image Storage <ul style="list-style-type: none"> Storage type Voice annotation Periodic image storage 	Built-in flash card, up to 700 radiometric JPEG images 8G SD card, up to >5600 radiometric JPEG images 60s voice record, stored with per image via built-in microphone. User defined, 10s at least	Built-in flash card, up to 700 radiometric JPEG images 8G SD card, up to >5600 radiometric JPEG images 60s voice record, stored with per image via built-in microphone. User defined, 10s at least
● Laser Point <ul style="list-style-type: none"> Grade/Type 	Class 2, 1mW/635nm Red	Class 2, 1mW/635nm Red
● Power System <ul style="list-style-type: none"> Battery type Battery operation time Charging System AC supply Power saving 	Rechargeable and replaceable li-ion battery 3 hours In camera, AC adapter, car charger 110~240V AC, 50/60Hz, 9~12V DC output Auto shutdown(user defined)	Rechargeable and replaceable li-ion battery 3 hours In camera, AC adapter, car charger 110~240V AC, 50/60Hz, 9~12V DC output Auto shutdown(user defined)
● Environment Parameters <ul style="list-style-type: none"> Operation temperature Storage temperature Humidity Encapsulation Shock Vibration 	-20℃ ~ +50℃ -40℃ ~ +70℃ ≤95% (Non-condense) IP54 (IEC60529) 25G, IEC60068-2-29 2G, IEC60068-2-6	-20℃ ~ +50℃ -40℃ ~ +70℃ ≤95% (Non-condense) IP54 (IEC60529) 25G, IEC60068-2-29 2G, IEC60068-2-6
● Physical Data <ul style="list-style-type: none"> Weight Size(L×W×H) 	≤1.3Kg(with battery and standard lens) 200*117*127mm	≤1.3Kg(with battery and standard lens) 200*117*127mm
● Interfaces <ul style="list-style-type: none"> USB Blue tooth Vedio output Audio output Power Tripod 	Radiometric images transfer to and from PC Yes CVBS Yes Yes 1/4" _20	Radiometric images transfer to and from PC Yes CVBS Yes Yes 1/4" _20
● Packing <ul style="list-style-type: none"> Standard 	Thermal imaging camera with standard IR lens, 2 Li-ion batteries, Battery charger, Adapter, USB cable, SD card, SD card reader, Software CD, warranty card, transport case	Thermal imaging camera with standard IR lens, 2 Li-ion batteries, Battery charger, Adapter, USB cable, SD card, SD card reader, Software CD, warranty card, transport case



Application
Anwendungsbereich

Model
Modell

Application Anwendungsbereich	Model Modell	Model	Model	Model	Model	Model
Building Investigation Gebäudethermografie		●	●	●	●	
Electrical Thermography Elektrothermografie		●	●	●	●	
Medical/Human Body Investigation Medizintechnische Anwendungen		●	●	●	●	○
Predictive Maintenance Vorbeugende Instandhaltung		●	●	●	●	○
Research & Development Forschung & Entwicklung		○	○	●	●	●
Automation/Conditional Monitoring Automation/Qualitätssicherung				●	●	●
Industrial Process Control Industrielle Prozesskontrolle				●	●	●
Surveillance/Rescue Management Fernbeobachtung/Sicherheitstechnik					●	
Traffic Control Verkehrsüberwachung					●	
Furnace/Glass melting industry Brennraum/Glasschmelze						●
Flame- and plastic measurement Flamm- und Folienmessung						●

○ capable geeignet ● well suitable gut geeignet ● particularly suitable sehr gut geeignet

Your local partner
Ihre lokale Vertretung