

INFRARED SOLUTIONS - SYSTEMS & SERVICES



irPOD.net

INFRARED-CAMERA-CONFIGURATOR
www.irPOD.net

Thermal Imaging Cameras TI400 & TI600



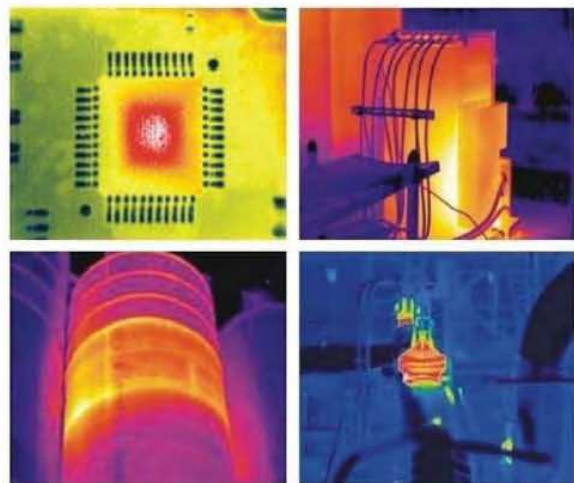
ULIRvision TI400 & TI600 are with cutting-edge thermal imaging technology, provide high performance with 5MP visual camera, interchangeable lens, large 5" foldable and rotatable LCD, manual & auto focus.

Thermal imaging cameras TI400 & TI600 are with ergonomic design, super image quality, multiple measurements, providing powerful assistance for thermographers to have the most efficient instrument for maintenance inspections. ULIRvision TI400 & TI600 have a wide range temperature measurement to satisfy variety of thermograph applications, they enable you to identify the small temperature difference that could cause big problems.

Features

- High IR resolution
- Excellent thermal image and high accuracy temperature measurement
- Folding and 270° rotatable display
- Auto/Motor focus for one-hand operation
- Bright LED light, Laser pointer
- Built-in digital camera
- Wide temperature measurement range
- 60sec voice annotation
- Interchangeable IR lens
- Scalable P-I-P and Thermal fusion
- Multiple Measurement
- Real-time thermal video transfer to PC via USB, and remote transfer via MSN and Skype
- New generation IRSee analysis software

Applications



Technical Specifications

Item	TI400S	TI600S
Detector Data		
<ul style="list-style-type: none"> Detector type IR resolution Pixel pitch Spectral range 	Uncooled FPA 384 × 288 25 μm 8–14 μm	Uncooled FPA 640 × 480 25 μm 8–14 μm
Image Performance		
<ul style="list-style-type: none"> FOV/Min focus distance IFOV NETD/Sensitivity Frequency Focus Digital Zoom Visual camera Spotlight Image mode 	24° × 18° / 0.4m 48° × 36° / 0.3m 6° × 4.5° / 1m 1.3mrad(240 × 180) <65mk@30℃ 50Hz/60Hz Manual/Motor/Auto 1–8 × continuous 5.0 mega pixel 10cd/m ² Thermal image, visual images, P-I-P, thermal fusion, W-I-W	24° × 18° / 0.6m 48° × 36° / 0.3m 12° × 9° / 1.2m 0.65mrad(240 × 180) <60mk@30℃ 50Hz/60Hz Manual/Motor/Auto 1–8 × continuous 5.0 mega pixel 10cd/m ² Thermal image, visual images, P-I-P, thermal fusion, W-I-W
Image Display		
<ul style="list-style-type: none"> Viewfinder Display 	0.6" color OLED, with magnification 5", 270° tiltable LCD, 800×480 pixels	0.6" color OLED, with magnification 5", 270° tiltable LCD, 800×480 pixels
Measurement		
<ul style="list-style-type: none"> Temperature range Temperature accuracy Measurement correction Spotmeter Area Line profile Isotherms analysis Delta T Emissivity correction Alarm Dew point alarm Color Palettes Image adjustment Setting function Background temperature correction Atmospheric transmissivity correction Languages 	-20℃ ~ 600℃ (Standard) -20℃ ~ 1200℃ (optional) ±2℃ or ±2% of reading Auto/Manual 4 adjustable spots 3 adjustable boxes with max./min./avg temperature value Vertical/Horizontal Capture high/low temperature/interval Yes Adjustable from 0.01 to 1.0 or selected from list of materials Voice, color Yes 12 palettes (including iron, rainbow, white hot and black hot etc.) Adjust contrast and brightness auto/manual Date/time, temperature/interval unit °C/°F/K, language Auto Auto 10 Languages(English, French, Italian, German, Spanish, Portuguese, Russian, Korean, Japanese, Simplified Chinese & Traditional Chinese)	-20℃ ~ 600℃ (Standard) -20℃ ~ 1200℃ (optional) ±2℃ or ±2% of reading Auto/Manual 4 adjustable spots 3 adjustable boxes with max./min./avg temperature value Vertical/Horizontal Capture high/low temperature/interval Yes Adjustable from 0.01 to 1.0 or selected from list of materials Voice, color Yes 12 palettes (including iron, rainbow, white hot and black hot etc.) Adjust contrast and brightness auto/manual Date/time, temperature/interval unit °C/°F/K, language Auto Auto 10 Languages(English, French, Italian, German, Spanish, Portuguese, Russian, Korean, Japanese, Simplified Chinese & Traditional Chinese)
Image Storage		
<ul style="list-style-type: none"> Storage type Voice annotation Periodic image storage 	Built-in flash card, up to 700 radiometric JPEG images 8G SD card, up to >5600 radiometric JPEG images 60s voice record, stored with per image via built-in microphone. User defined, 10s at least	Built-in flash card, up to 700 radiometric JPEG images 8G SD card, up to >5600 radiometric JPEG images 60s voice record, stored with per image via built-in microphone. User defined, 10s at least
Laser Point		
<ul style="list-style-type: none"> Grade/Type 	Class 2, 1mW/635nm Red	Class 2, 1mW/635nm Red
Power System		
<ul style="list-style-type: none"> Battery type Battery operation time Charging System AC supply Power saving 	Rechargeable and replaceable li-ion battery 3 hours In camera, AC adapter, car charger 110~240V AC, 50/60Hz, 9~12V DC output Auto shutdown(user defined)	Rechargeable and replaceable li-ion battery 3 hours In camera, AC adapter, car charger 110~240V AC, 50/60Hz, 9~12V DC output Auto shutdown(user defined)
Environment Parameters		
<ul style="list-style-type: none"> Operation temperature Storage temperature Humidity Encapsulation Shock Vibration 	-20℃ ~ +50℃ -40℃ ~ +70℃ ≤95% (Non-condense) IP54 (IEC60529) 25G, IEC60068-2-29 2G, IEC60068-2-6	-20℃ ~ +50℃ -40℃ ~ +70℃ ≤95% (Non-condense) IP54 (IEC60529) 25G, IEC60068-2-29 2G, IEC60068-2-6
Physical Data		
<ul style="list-style-type: none"> Weight Size(L × W × H) 	≤1.3Kg(with battery and standard lens) 200*117*127mm	≤1.3Kg(with battery and standard lens) 200*117*127mm
Interfaces		
<ul style="list-style-type: none"> USB Blue tooth Vedio output Audio output Power Tripod 	Radiometric images transfer to and from PC Yes CVBS Yes Yes 1/4" _20	Radiometric images transfer to and from PC Yes CVBS Yes Yes 1/4" _20
Packing		
<ul style="list-style-type: none"> Standard 	Thermal imaging camera with standard IR lens, 2 Li-ion batteries, Battery charger, Adapter, USB cable, SD card, SD card reader, Software CD, warranty card, transport case	Thermal imaging camera with standard IR lens, 2 Li-ion batteries, Battery charger, Adapter, USB cable, SD card, SD card reader, Software CD, warranty card, transport case





Application Anwendungsbereich	Model Modell					
Building Investigation Gebäudethermografie		●	●	●	●	
Electrical Thermography Elektrothermografie		●	●	●	●	
Medical/Human Body Investigation Medizintechnische Anwendungen		●	●	●	●	○
Predictive Maintenance Vorbeugende Instandhaltung		●	●	●	●	○
Research & Development Forschung & Entwicklung		○	○	●	●	●
Automation/Conditional Monitoring Automation/Qualitätssicherung				●	●	●
Industrial Process Control Industrielle Prozesskontrolle				●	●	●
Surveillance/Rescue Management Fernbeobachtung/Sicherheitstechnik					●	
Traffic Control Verkehrsüberwachung					●	
Furnace/Glass melting industry Brennraum/Glasschmelze						●
Flame- and plastic measurement Flamm- und Folienmessung						●

○ capable geeignet ● well suitable gut geeignet ● particularly suitable sehr gut geeignet

Your local partner
Ihre lokale Vertretung